

# Support for schools during the transition to SAP

---

GLEN FRAZER, PRINCIPAL FINANCE OFFICER, SCHOOLS FINANCE

JACQUI HOOD, A/MANAGER, SAP SCHOOLS FINANCE

SRG NIRIMBA SAM CONFERENCE 30 OCTOBER 2015

# Current Structure

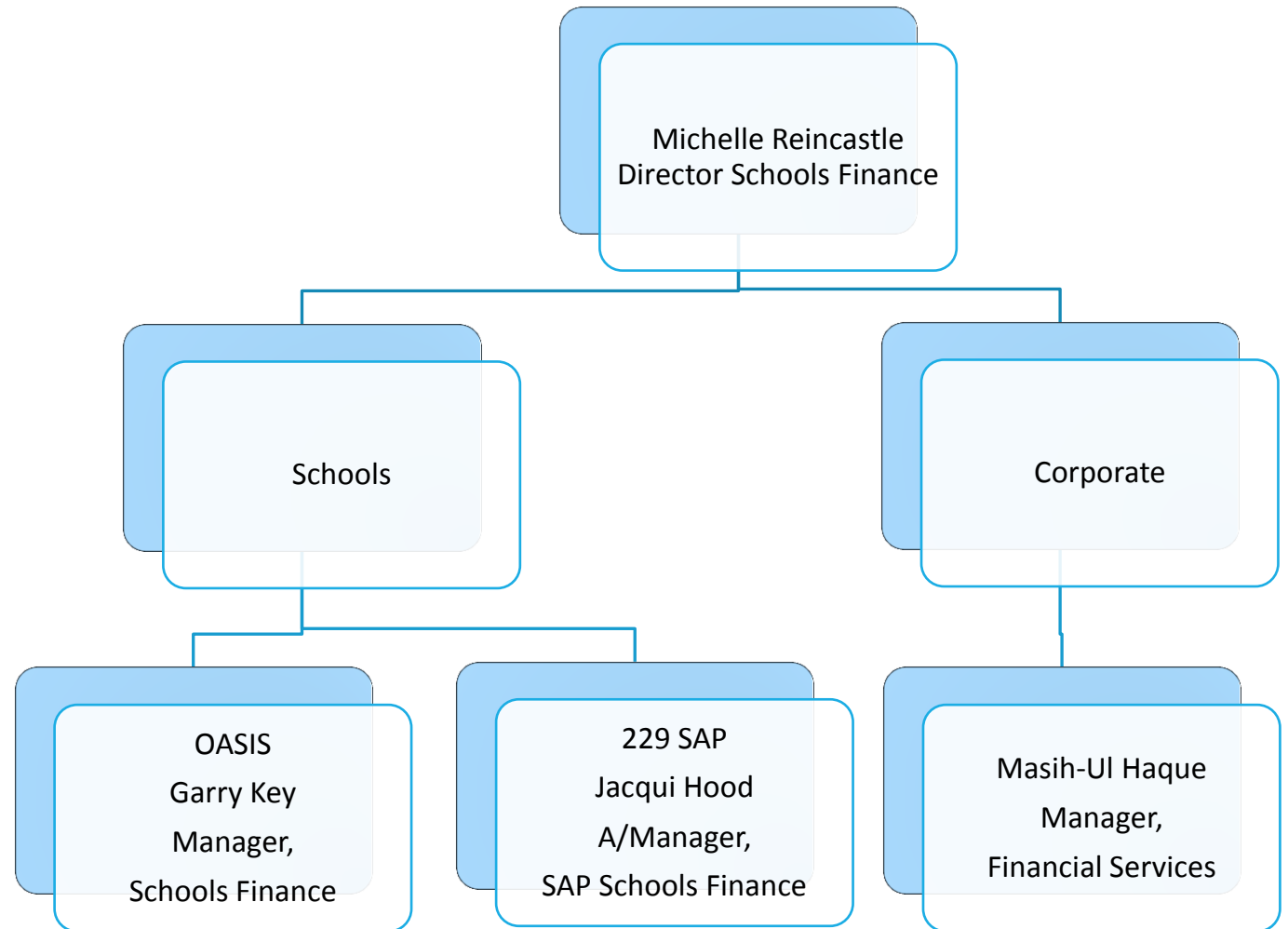
229 SAP schools – HS & PS

2,000 OASIS schools,

includes IECs, EECs,

Residential Agricultural High Schools,

Small Schools Finance Centres



# Schools Finance – Garry

---

- Issues affecting 2,229 schools
- Finance In Schools Handbook (FISH)
- Provide support to close OASIS and bank accounts when transitioning to SAP
- Policies for 2,229 schools
- Annual Financial Statements
- Annual Financial Statement training
- Schools Finance Support staff - 13 1072

# SAP Schools Finance – Jacqui

---

- Issues affecting 229 schools
- Specialist staff to support schools
- Reporting and financial management
- Schools Budgeting and Forecasting Solution (BPC)
- Cost centre maintenance
- Assess and investigate incidents logged through the Shared Service Centre where the issue is across all schools or the issue has the potential to impact all schools

# Shared Service Centre – Parramatta

---

- Different support model
- All “incidents” are logged and referred to relevant support areas
- Calls are logged and when not answered immediately referred to the next level of support
- Single telephone number to the support line filled with support staff

# SALM/Finance Schools Support – Garry Raftery

---

- Schools staff proficient in ebs4
- Ebs4 Refresh training
- BPC refresh training
- Adobe Connect sessions
- Deal directly with school staff to resolve issues logged through the Shared Service Centre

# LMBR

---

- Migration of schools to SAP
- Documentation
- Templates
- Communication
- Change management issues relating to the transition
- BPC training materials
- Maintain SAP Quick Reference Guides
- Maintain SAP training materials

# LSLD

---

- HR staffing
- Equity funding
- RAM
- Accrual accounting courses



# Schools Finance

---

- After migration –Schools Finance Support staff will go from Garry's team to Jacqui's team
- Transition to provide support on financial management issues for SAP schools
- Cost centre reviews
- More accounting and system related issues across all or most schools, not individual schools